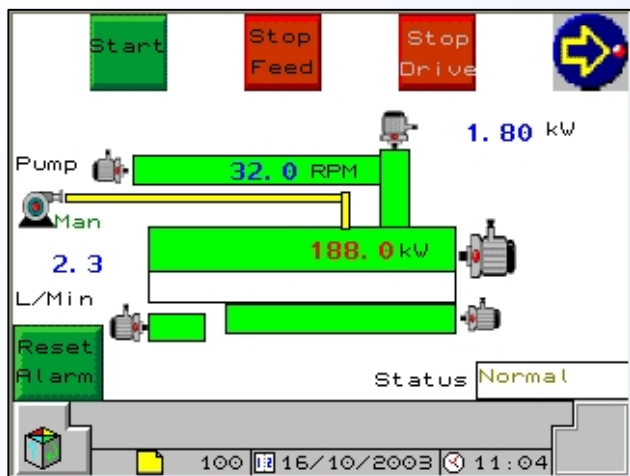


Compress V - The Press Control System

A Sterling Series Option

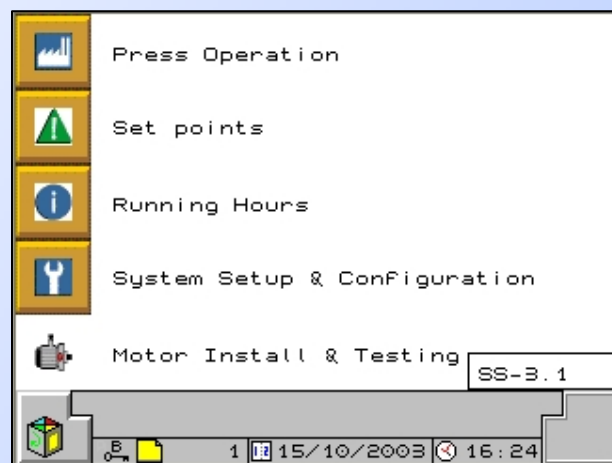


The **Compress System** can be fitted to almost any Press. It will continually monitor Press operation and control the Press to prevent situations developing that might overload it.

Compress systems are available for fixed speed and Inverter driven main Press drives. A stand alone control module version is also available to retrofit in an existing plant utilising the existing motor starter arrangements.

The **Compress System** is built on Industrial standard Schneider PLC and display equipment. These are tried and tested products giving excellent reliability and ease of obtaining spares parts and service.

Press Operation and Control is by means of a simple touch screen display system. Set up and configuration options are password protected. The COMPRESS system can also be monitored and controlled from any PC via an Ethernet link.



Significantly reduced Operator intervention.

- Controls Press operation to within safe power ranges.
- Takes action to prevent costly stoppages.
- Continuous Monitoring of Press Operation.

Maintains a pre-set Feeder Speed.

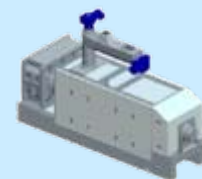
- A Press is a Volumetric Device. On a particular feed material it works best at a particular constant feed volume.
- The Mill, as a whole runs, best under steady state conditions.

Easy to use Graphical Display.

- Simple Graphical Interface with Touch Screen operation.
- Operational parameters can be changed and the System operation customised by a simple password protected Menu driven system.
- Remote Press monitoring via Networked PCs

Control using Moisture. (Aqua-Trol).

- Controls Press load by altering the rate of Water Injection.
Particularly applicable to Rendering applications.



Compress V - The Press Control System

A Sterling Series Option

Compress Operating Modes

Normal Operation & High Load

The Press feed rate is maintained at a fixed speed. Unless the Motor Load is too high in which case the Feed Rate is reduced.

At the same time COMPRESS will Detect and Compensates for:

Very High Loads

The Press Load is dangerously high; The system makes large reductions to the Press Feed Rate, to prevent an imminent problem from stalling or damaging the Press.

Feed Inlet Full

No more material can enter the Press. The Feeder speed is controlled to match the intake rate.

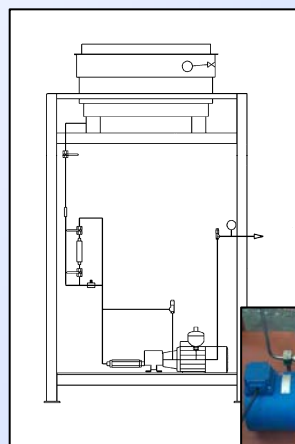
Low Load Mode & Programmed Start

When little or no feed is reaching the Press the Feeder Speed is reduced to a "Safe" start-up speed and the Press waits until Feed is restored. On restoration of feed to the Press the feeder speed is automatically increased in a controlled manner to the Set Speed.

Extreme High Loads

There is a major Overload of the Press, probably caused by mechanical damage or Tramp metal in the Press. The Press is shut down immediately to prevent further damage.

Aqua-Trol



Aqua-Trol is a self contained system capable of Injecting fluid directly into the working areas of the Worm Assembly. Injecting the water directly into these areas does not adversely effect the pressing operation in the way that adding water to the Press Feed can do. Also the effect of the water addition on the motor load is immediate as it is injected directly to the area of the Press where the most load is developed.

- Instant reaction on Motor Load
- Reduces effect on Pressing Operation
- Can be used to Control Press Load
- Reduces Power Consumption
- Increases Moisture in Press Cake